

JOHN LEWIS
& PARTNERS

John Lewis Santa Experiences



A social story



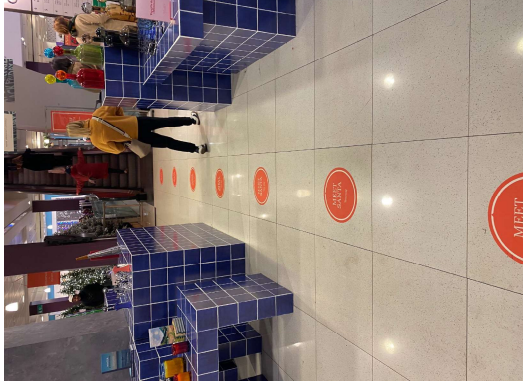
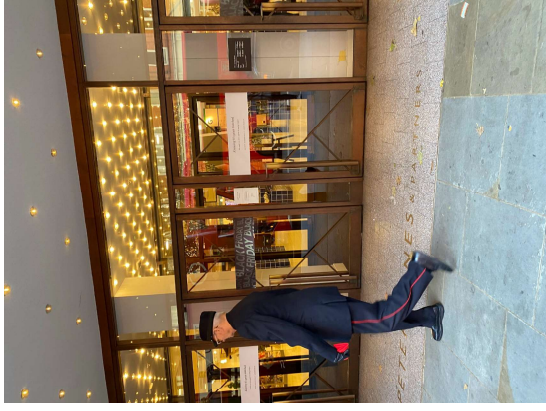
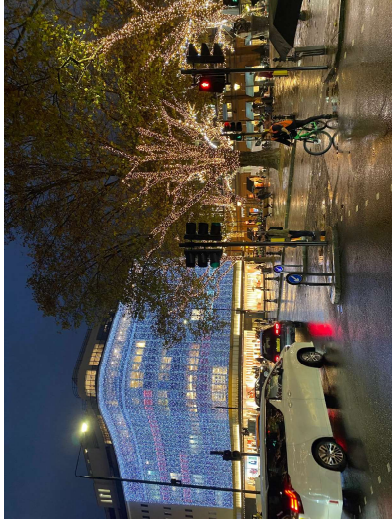
Santa Experience Social Story

Peter Jones

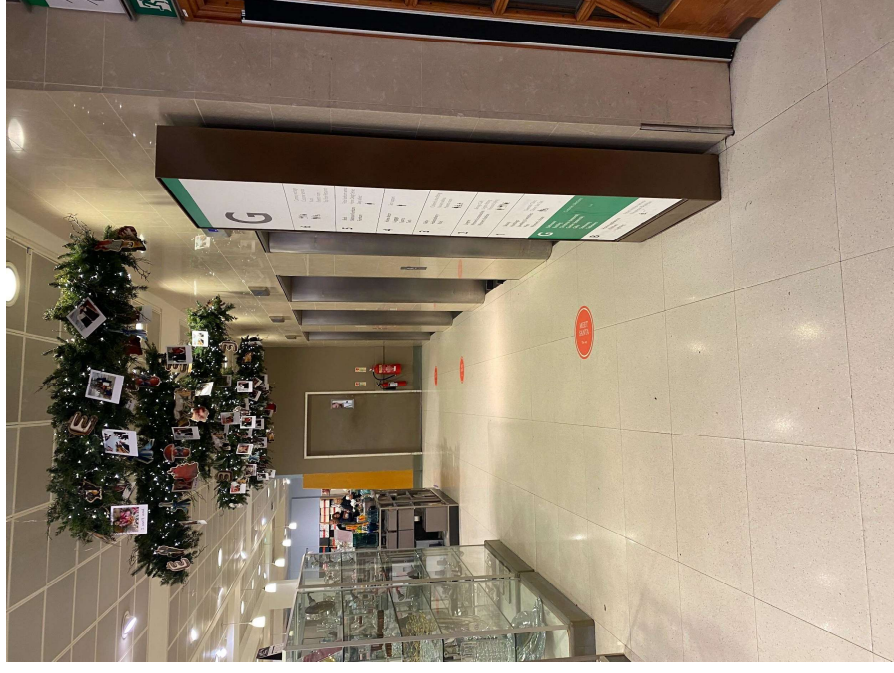
Santa Experience

The Santa Experience in Peter Jones. The main entrance is on **Kings Road**.

When you **arrive outside** it will look like this. When you **enter the store**, it will look like this.

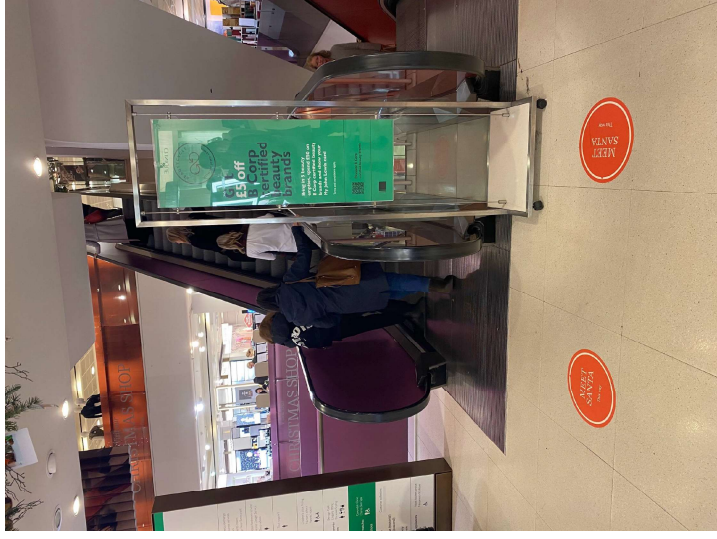


If you park in the John Lewis car park, the entrance looks like this.

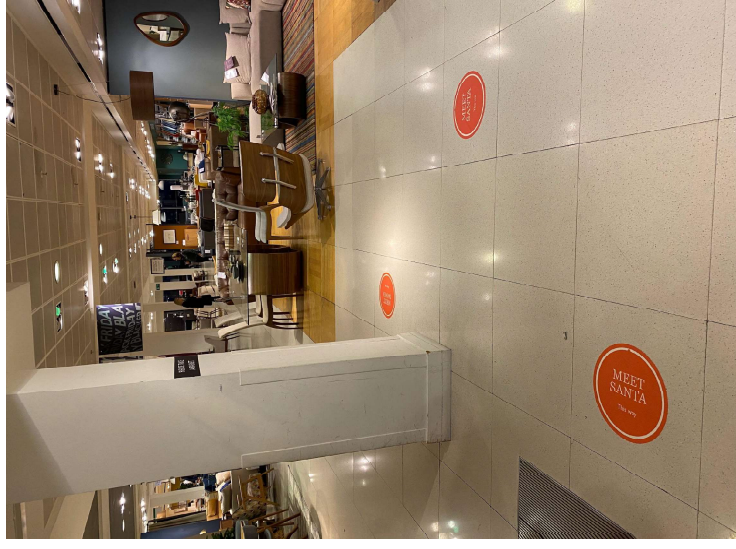
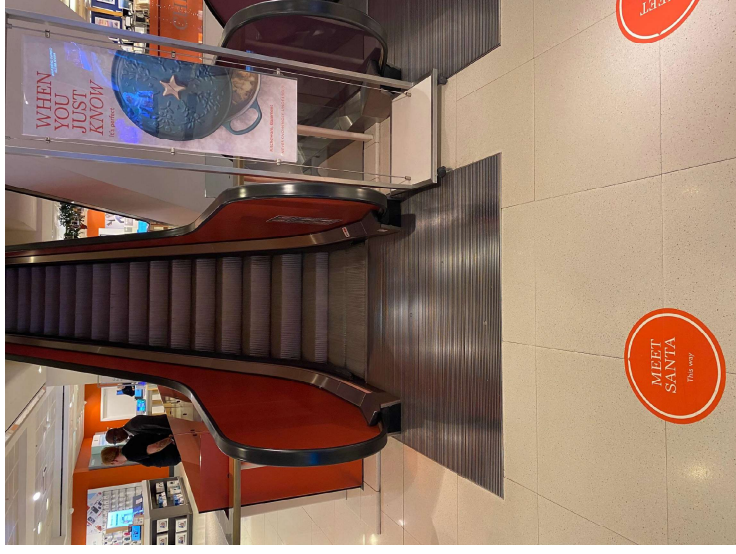


And when you come **inside** the store, it will look like this.

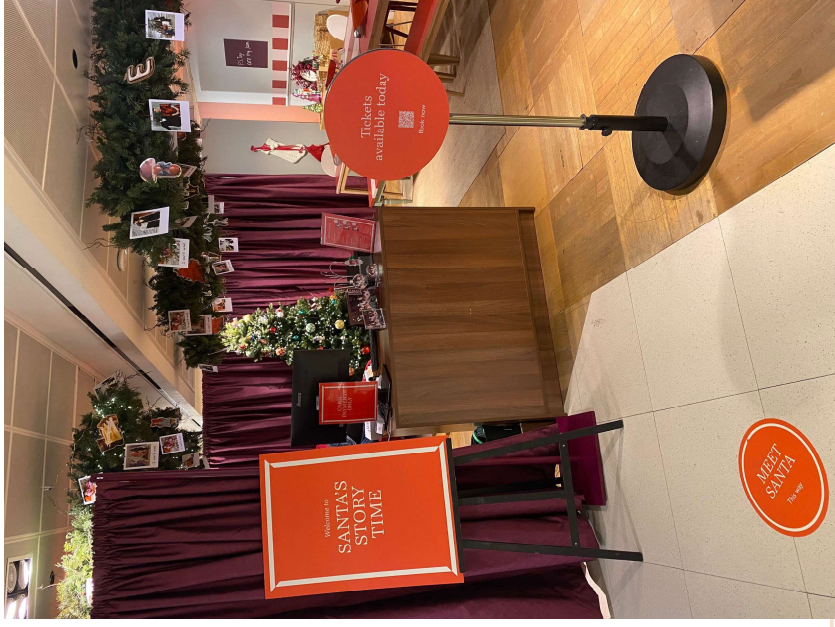
To get to the Santa Experience, you can take the lift or the escalator, the choice is yours!



To get to the Santa Experience, you can take the lift or the escalator, the choice is yours!



You will then get to the **Santa Experience!**
The **entrance** to the Santa Experience looks like this.



You can also enjoy a **Christmas story**.
The **story** time area looks like this.



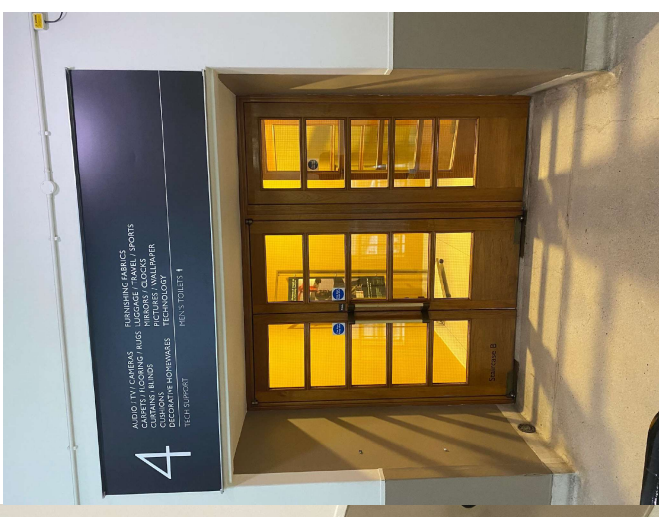
You can have fun doing some **crafts** in the
Santa Experience. The **craft** area looks
like this.

You can take a look at your photos here!



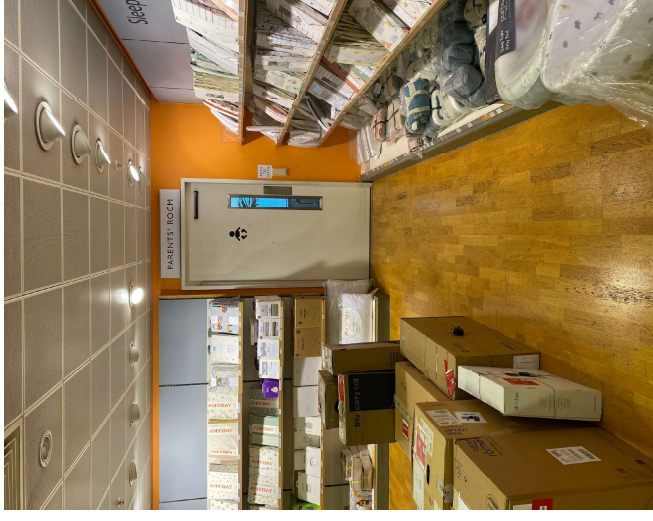
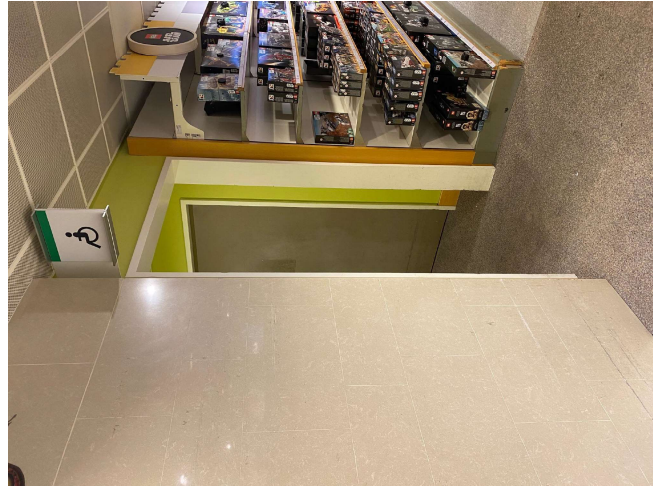
If you need to use the **toilet** you can make your way to floor 5 & 4.

The toilets look like this.



If you need to use the **disabled toilet** and **mother & baby changing rooms** you can make your way to floor 3.

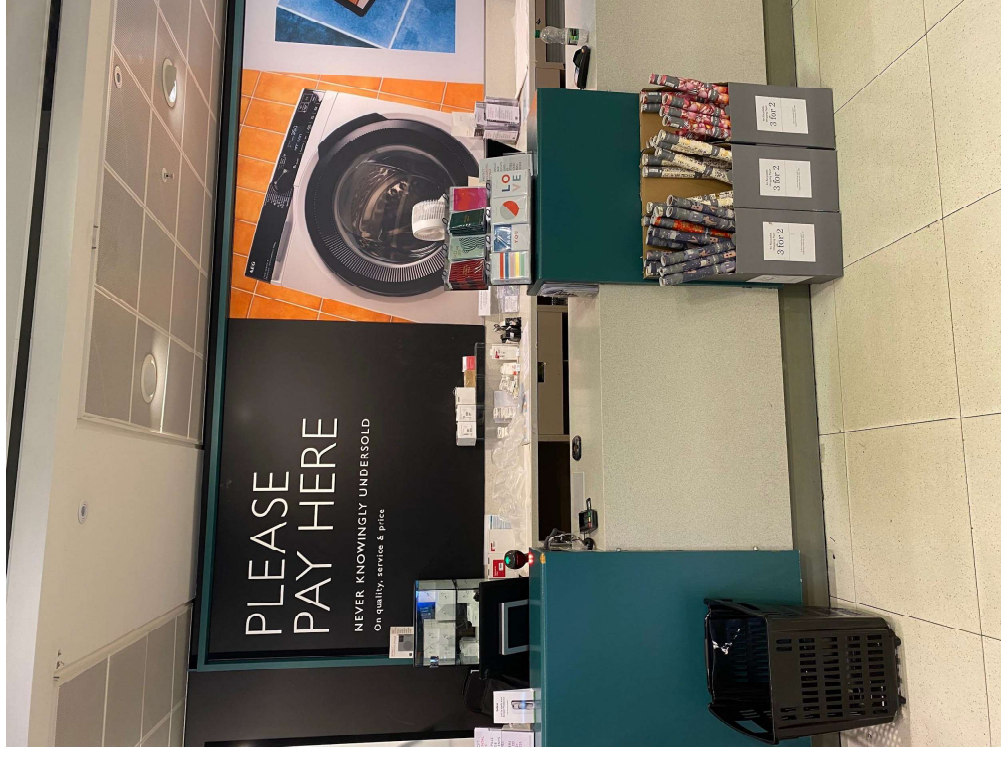
The toilets look like this.



The **tills** are located on Floor 4.

This area can sometimes be busy and noisy.

The till point looks like this.



We are really looking forward to your visit.

If you have any further questions about **accessibility**, please come and speak to a Partner in the shop



We hope you have a magical time!